

Product Data Sheet

Published Date: 09.11.2021



Hyperion IonCharge50 (75W)



Product Code: AIC50-75DC

The new Meech Hyperion IonCharge50 is part of the new IonCharge family of static generators from Meech that includes IonCharge50 and the more compact IonCharge30. The IonCharge50 will be available in two different versions, the IonCharge50 (75W) and later an IonCharge50 (150W) variant.

IonCharge50 (75W) static generator is designed for a range of applications. It uses advanced high voltage technology and software for a controlled static charge via our range of static generator bars and pinning heads.

The IonCharge50 provides independently selectable voltage and current and the inclusion of a colour touchscreen interface provides simple adjustment and clear display of settings.

The functionality and simple adjustment and control of the output voltage and current means that the IonCharge50 is extremely versatile and effective for a range of applications and materials.

Product shown in this document may be covered by one or more patents, patents applied for and/or registered designs and/or trade marks. For further information please refer to our Head Office or visit www.meech.com.

Meech International

UK: +44 1993 706 700
Hungary: +36 27 535 075

US: +1 330 564 2000
China: +86 400 820 0102

Belgium: +32 8067 0204
India: +91 (0)7030938211

Singapore: +65 65918859

email: sales@meech.com
web: www.meech.com

© Meech Static Eliminators Ltd 2020

Product Data Sheet

Published Date: 09.11.2021



Features & Benefits

High Power from 75W Providing Output Range For Voltage (0-50kV) and Current (0-2.5mA)	Performance can be optimised for a variety of applications and maximum pinning effect can be achieved without risk of overload.
Hyperion 24V DC Power Supply or 240V AC Power Supply	Choice of power supplies for flexibility in meeting installation requirements.
Perforation and Hole Detection	Built in perforation and hole detection functionality for use in applications such as the manufacture of plastic bags.
Fast Rise Time (50ms into 10MΩ)	For responsive performance and precise pinning.
Voltage regulation at 50kV better than 1.0%	For accurate static generation.
Multi-Language Support	IonCharge50 supports multi-language displays in English, Mandarin, French, German, Italian and Spanish.
Independently Selectable Voltage and Current	Increased control across a range of applications and material types.
Colour Touch Screen User Interface	Clear and intuitive information display and simple input of settings.
Auto Trip on Detection of 'Flashover'	Reduces the risk of damage to equipment and/or materials being processed.
SmartControl Connectivity	When connected to a SmartControl unit there are the benefits of remote monitoring and control (refer to SmartControl manual for further information).
Remote On/Off Input	Unit can be switched on and off in association with machine operation for process and integration.
4-20mA Input	Allows remote control of voltage and current.
Twin High Voltage Outputs	Multiple generator bars can be connected.
Connectivity to Industrial Networks	Optional industrial network connectivity via built-in module for integration with existing PLC compatible industrial networks for monitoring and control.

Product shown in this document may be covered by one or more patents, patents applied for and/or registered designs and/or trade marks. For further information please refer to our Head Office or visit www.meech.com.

Meech International

UK: +44 1993 706 700
Hungary: +36 27 535 075

US: +1 330 564 2000
China: +86 400 820 0102

Belgium: +32 8067 0204
India: +91 (0)7030938211

Singapore: +65 65918859

email: sales@meech.com
web: www.meech.com

Product Data Sheet

Published Date: 09.11.2021



Technical Characteristics

Max Output Power	75W
Supply Voltage	24V DC or 90-270V AC
Max Power Consumption	100W
Input Connection	M8 4 Pole (24V DC) or IEC Socket - Fused (90-270V AC)
Output Voltage	0 - 50kV
Output Current	0 - 2.5mA
Output Polarity	Negative or positive to be specified
Adjustment Increments	Voltage (V) 0.1kV Current (I) 0.01mA
Perforation and Hole Detection	Up to 1200 counting pulses per minute (20Hz). Minimum output pulse duration 15ms (e.g. to PLC).
HT Output	2x Meech 50kV connection ports
Industrial Ethernet Network Connectivity	Optional for integration of IonCharge50 to Industrial Ethernet based networks including Profinet-IRT, Modbus TCP and Ethernet/IP
User Interface	5" touchscreen
Password Protection	2 level, screen and adjustment lock
4-20mA Control	Independent voltage and current inputs. Input resistance 1k Ω
HT Output Rise Time	50ms
Operating Environment	Industrial
Protection Class	IP20
Dimensions (W x H x D)	231.4 x 126 x 268.5mm
Weight	3.75 kg
Housing Material	ABS, Powder Coated Steel

Product shown in this document may be covered by one or more patents, patents applied for and/or registered designs and/or trade marks. For further information please refer to our Head Office or visit www.meech.com.

Meech International

UK: +44 1993 706 700
Hungary: +36 27 535 075

US: +1 330 564 2000
China: +86 400 820 0102

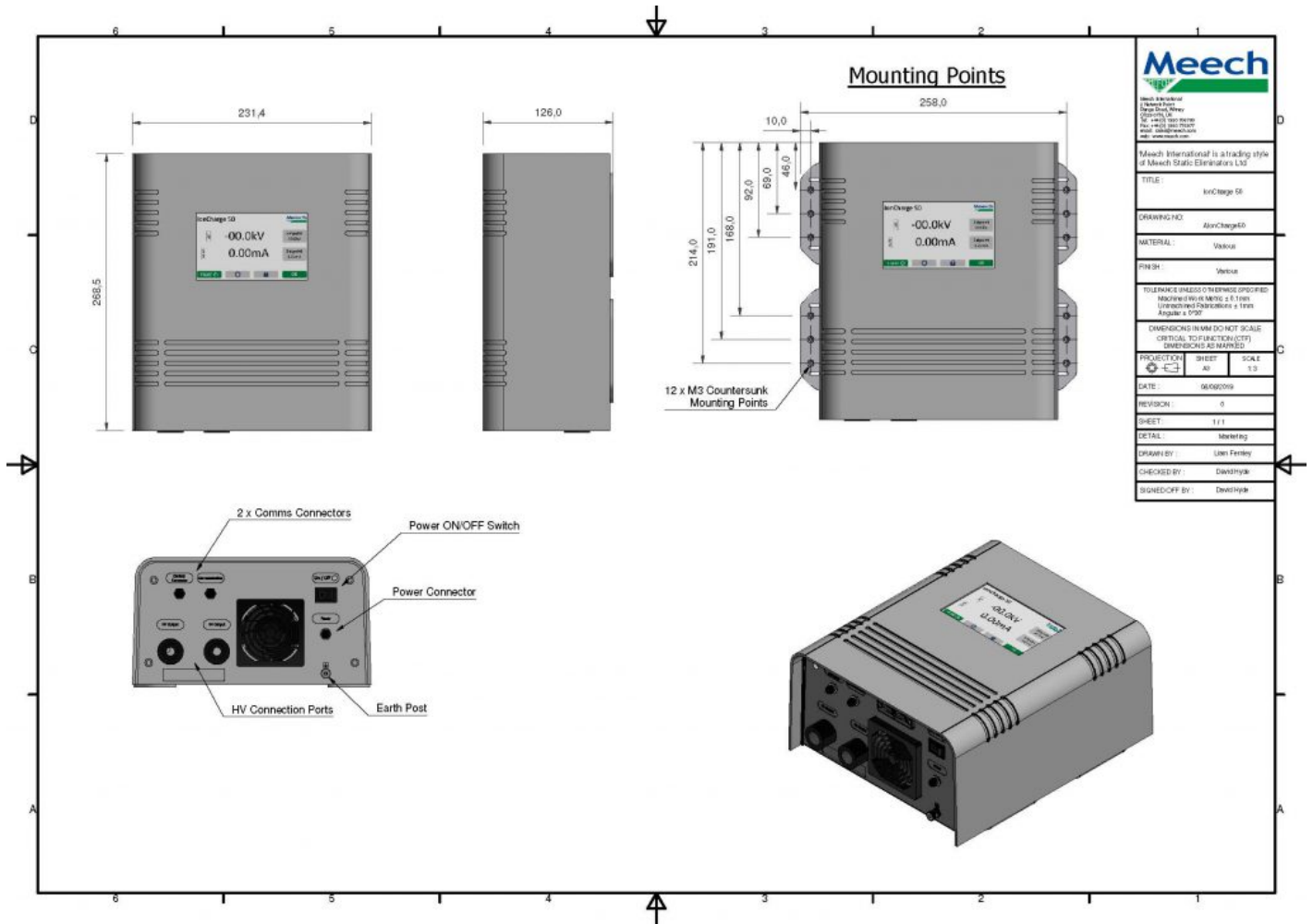
Belgium: +32 8067 0204
India: +91 (0)7030938211

Singapore: +65 65918859

email: sales@meech.com
web: www.meech.com

Product Data Sheet

Published Date: 09.11.2021



Product shown in this document may be covered by one or more patents, patents applied for and/or registered designs and/or trade marks. For further information please refer to our Head Office or visit www.meech.com.

Meech International

UK: +44 1993 706 700
Hungary: +36 27 535 075

US: +1 330 564 2000
China: +86 400 820 0102

Belgium: +32 8067 0204
India: +91 (0)7030938211

Singapore: +65 65918859

email: sales@meech.com
web: www.meech.com